



Open Water

NATIONAL MASTERS CHAMPIONSHIPS

ENTRY PACK

26 JULY 2026 | ROTHER VALLEY COUNTRY PARK



Open
Water



Funding Partner



Official Kit Partner



WILL JOHNSTON
PHOTOGRAPHY

1



Contents

Introduction	3
Contacts.....	3
Key Dates	3
Pre-event Information (online briefing)	3
Privacy Policy and Photography Consent.....	4
Travel Insurance	4
Schedule*	4
How to Enter	5
Entry Deadlines	5
Entry Process	5
Athlete Declaration -	6
Online Entry.....	6
Relay Events	6
Relay Only Swimmers	7
Entry Confirmation.....	7
Race Courses	7
Accreditation	7
Anti-Doping Information	9
General Information	10
The Park.....	11
Travel	11
Car	11
Parking.....	11
Food and Drink.....	11
Spectator entry	11
Merchandise.....	11
Event Hoodies and T-Shirts pre-orders	11
Event Hoodies and T-Shirts on-venue sales	11
Swim England Merchandise.....	11
Event Photography	12
Conditions.....	13
Appendix 1 – Athlete Declaration	16



Introduction

This document contains the required information needed to enter the Swim England Open Water National Masters Championships 2026.

Please ensure you read this document carefully as some information may be new to you. All entries must be made online, including payment. Details on how to enter online are included in this document.



Contacts

Swim England	Venue
Events Officer	Rother Valley Country Park Mansfield Road, Wales Bar Sheffield S26 5PQ Tel: 01709 334455
Jade Williams Email: NationalEvents@swimming.org	
Safeguarding and Welfare	
Email: safeguarding@swimming.org	
Championships Website	
Swim England Open Water National Masters Championships 2026	



Key Dates

Entries Open	12 noon, Wednesday 10 June 2026
Temporary Membership Applications / Membership Queries Close	12 noon, Wednesday 1 July 2026
Athlete Declaration Submissions Closes	12 noon, Tuesday 7 July 2026
Entries Close	12 noon, Wednesday 8 July 2026
Pre-Event Information (Online Briefing)	12 noon OR 18:00 Tuesday 14 July 2026

Pre-event Information (online briefing)

Pre-event Information (online briefing)		Tuesday 14 July 2026
Option 1	12 noon	Joining instructions will be detailed in the Confirmation Pack
Option 2	18:00	

One representative from every club or athletes due to participate in the Championships (this can be a coach or team manager) is encouraged to attend an online pre-event briefing to hear all the key event information.

Only one of the above meetings needs to be attended, as the same information will be conveyed. There is no requirement to sign up in advance. Although this is not a mandatory briefing, we strongly encourage participation.

The online briefing does not replace the race day mandatory safety briefing.



Privacy Policy and Photography Consent

All individuals attending Swim England events are asked to complete the photo consent form below, prior to attending the event:

PHOTOGRAPHY CONSENT FORM

To view further details about how Swim England manages your data, please refer to Swim England Privacy Policy (Policy: [SE1046 Privacy Policy](#)).



Travel Insurance

Affiliated Swim England clubs and members thereof have the benefit of third party and personal accident insurance effected by Swim England. However, this does not include travel insurance for trips in the UK or abroad, in particular, there is no cover for travel or accommodation costs for the cancellation of an event.

Some clubs and members may already have the benefit of their own group or personal travel insurance. For those that do not have travel insurance for this event and wish to get a Sport Travel Insurance quote please contact Howden directly on 0121 698 8052. Alternatively, you can seek cover from another insurance provider.

Unfortunately, non-Swim England members do not have the benefit of third party and personal accident insurance effected by Swim England and would therefore need to seek insurance coverage separately.

Schedule*

Events*	Registration	Race
Swim England National Masters – 5km	08:00	10:00
Swim England National Masters – 1km	10:20	12:30
Swim England National Masters – 3km	12:15	14:20
Swim England National Masters – Mixed Relay 4x500m	14:30	16:30

**Please note, the above timings are subject to change depending on the number of entries received. The 3km and relay events may move up to 60 minutes earlier.*

Competitors will also be required to attend a pre-race briefing, timings for which will be confirmed in the Confirmation Pack after close of entries.

How to Enter

Before starting the athlete entry process, please familiarise yourself with the event Conditions and read the entry information below carefully. Carefully read the entry information below and resolve any membership-related queries as soon as possible, no later than seven working days before entries close.

Entry Deadlines

Entries Open	12 noon, Wednesday 10 June 2026
Athlete Declaration CLOSES	12 noon, Tuesday 7 July 2026
Entries Close	12 noon, Wednesday 8 July 2026

All athlete declarations, entries, and payments must be received by the stated deadlines. Late submissions, incomplete entries, missing payments or incorrectly completed forms will not be accepted beyond the closing deadlines.

The following must be completed first to ensure the athlete is available for selection in the entry system and an entry can be submitted:

- Correct membership category and Club
- Submission of completed athlete declaration

Entry Process

Membership Queries / Temporary Membership Applications	
Membership queries and temporary membership applications must be brought to the attention of Membership team by no later than: Wed 1 July 2026	Wednesday 1 July 2026 T: 01509 640 727 E: support@swimming.org
Online Membership Check	MEMBERSHIP CHECK
Online Membership System	Online Membership System

Temporary Swim England members are eligible to enter these Championships – please contact NationalEvents@swimming.org for further information.



Athlete Declaration -

IMPORTANT: Entry will not be permitted until the athlete declaration form has been completed and submitted. Please ensure the form is completed in advance to allow time for any issues to be resolved before the entry deadline.

NOTE:

- ensure all information is entered correctly, paying special attention to the **Competitor membership number** field shown below. It must be entered without spaces, text, or any other characters. If incorrect, the entry system will not recognise it and you will be unable to complete your entry.

Competitor Membership Number *

- the entry system should update immediately after submission; however, please allow up to 12 hours for processing. If you are still unable to enter after this time, contact NationalEvents@swimming.org for assistance.

See [Appendix 1 – p.14](#)) for sample athlete declaration.

Athlete declaration submission Closes	12 noon, Tuesday 7 July 2026
Athlete declaration form	Submit HERE

You will be required to check and reconfirm the athlete declaration at registration on the day of the event.

Online Entry

Entries Close	12 noon, Wednesday 8 July			
Online Entries System:	SUBMIT ENTRIES HERE			
Entry Fees	5km	£40 / entry	3km	£35 / entry
	1km	£26 / entry	Relay	£70 / team
	Relay swimmer only (if not entered in an individual event)			£5 / competitor

- Enter your membership number or surname in the box and follow the instructions.

Relay Events

- Only one nominated team individual should enter their club relay team(s) into the Championships
- Swimmers' names are not required as part of this stage of the entry process
- Once entries have closed, entered relay teams will be required to declare their teams' swimmers and further information on the relay team declarations will be published in the Confirmation Pack once entries have closed.
- PLEASE NOTE: Only competitors who have entered via the online entry system during the entries period, either in an individual event or as a relay only swimmer, will be eligible for relay team selection and declaration.

Relay Only Swimmers

NOTE: If you are only competing in relays, you are still required to enter on the entry system within the stipulated entries period. The entry fee for Relay Only Swimmers is £5 / competitor and will need to be completed by 12 noon, Wednesday 8 July.

Payment Methods

Please follow the payment instructions.

The entry is not complete until payment is processed, and a confirmation email has been received. Entrants are reminded that they are bound by the conditions of entry without signature.

Entry Confirmation

All successful entries can be viewed online:

Entry List Viewer:

[CONFIRMED ENTRIES](#)

Competitors are asked to check their details carefully and contact the Events Team with any errors as soon as possible.

A Confirmation Pack will be circulated to all entrants once the initial entry deadline has passed.

Accreditation

There will be no accreditation in force at this event for athletes or coaches/team managers.

Race Courses

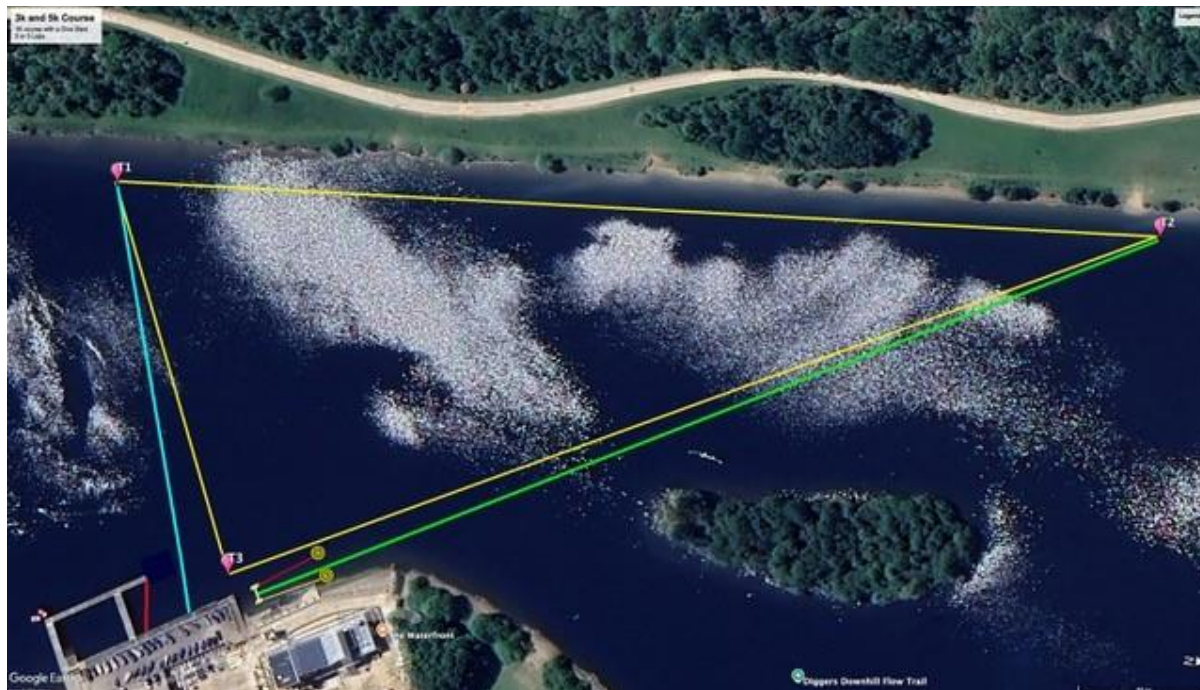
***NEW for 2026:** please note different race course layouts for the 2026 Championships (to previous years). Due to exciting development at the Country Park, with the build of a new café overlooking the lake, this year's Championships course has been updated to enable best participation and spectator experience.

Access to the swim start will be through the gate by the right-hand side of the Water Sports Centre and onto the start pontoon.

Prior to accessing the pontoon, for safety reasons, it is competitors' responsibility to ensure that the race numbers provided in competitor race packs are clearly displayed on competitor's hat, shoulders, arms and back of hands throughout the race. If wetsuits are worn then number will only be on hands and hat. Competitors will also be checked by the chip timing company and must ensure their timing chip is on each wrist, with the additional safety tally band either on the wrist or ankle.

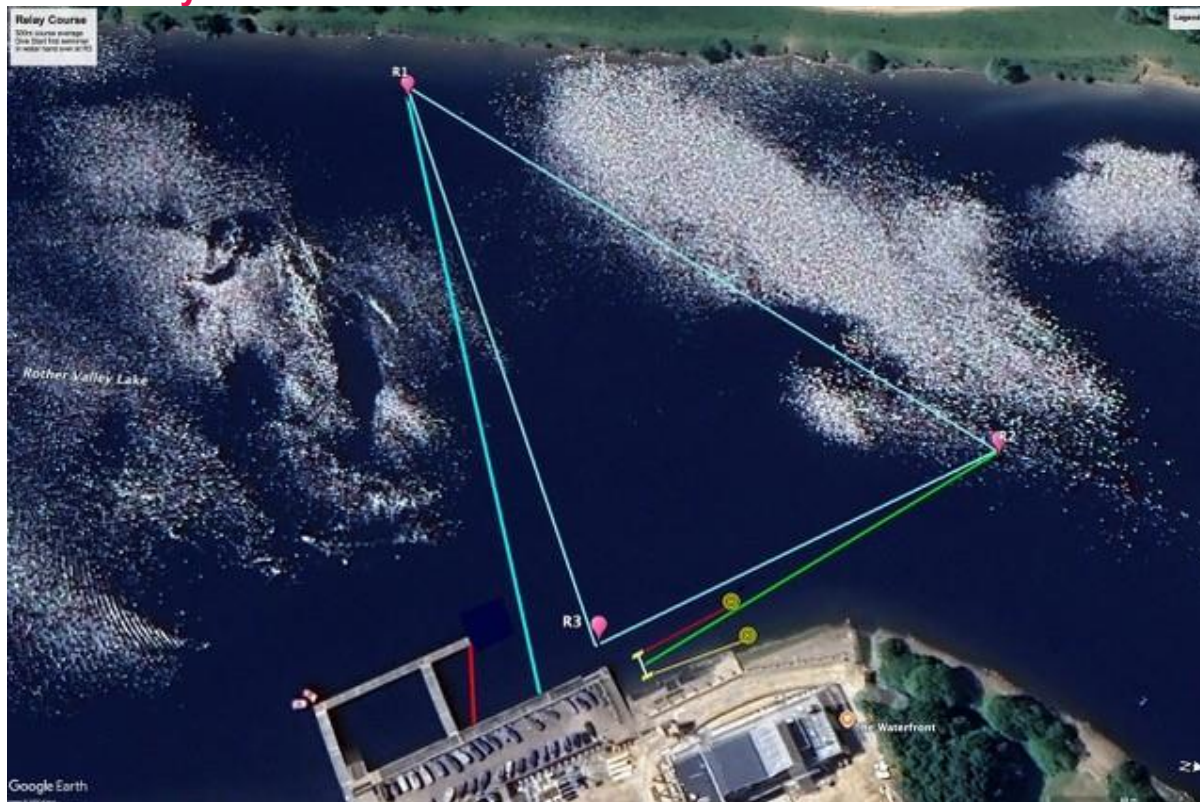
The event will start with a dive start from the pontoon. Competitors may start in the water if they inform the Referee at the briefing.

Individual races



- Start with a dive from the pontoon / in the water at the pontoon from allocated position
- Course is run anticlockwise: T1, T2, T3
- Repeat number of times to achieve race distance. Do not enter finish funnel until final lap
- 1 lap = 1 km (1000 metres):
 - o 1km swim 1 lap
 - o 3km swim 3 laps
 - o 5km swim 5 laps
- On turning at T3, for final time, head directly towards and into the finish funnel.
- The finish is "swim through" and competitors MUST reach up and touch the finish banner. This is essential to determine place and to ensure your timing chip is read.

Team Relay Races – 4 x 500m



- Start with a dive from the pontoon /in the water at the pontoon from allocated position
- Course is run clockwise: T1 and R2
- First 3 swimmers in each team swim outside/past the finish to pontoon
- Hand-over to next teammate at allocated position on pontoon
- Final member of team completes their lap by heading directly towards and into the finish funnel
- The finish is "swim through" and competitors MUST reach up and touch the finish banner. This is essential to determine place and to ensure your timing chip is read.

Anti-Doping Information

Anti-Doping Rules	Anti-Doping Rules
Swim England – further support	antidoping@swimming.org
Information on medications	UKAD website, click here
Medications check	Global DRO, Medications Check
How to apply for TUE	UKAD website, click here
National TUE Pool check	UKAD website, click here

By entering this event the athlete consents to report to Doping Control, if requested, at any time during this event and agrees to abide by the British Swimming Anti-Doping Rules (2021), which Swim England is signed up to.

If an athlete is tested through doping control at an event, they should ensure they provide detail of all medications (prescribed or over the counter and including dosage) and supplements taken within the last 7 days in advance of the test on the Doping Control Form. Any previously disclosed medications or supplements to the athlete's club and/or talent programme are still required to be included on the doping control form.

Medications

- Medication should be checked via Global DRO (see above).
- If the medication being taken is prohibited in or out of competition, a Therapeutic Use Exemption (TUE) may be required.

Therapeutic Use Exemption (TUE)

- If an athlete IS WITHIN the National TUE Pool they are required to obtain a TUE before using a prohibited medication or method. Athletes can check if they are within the National TUE Pool via UKAD website (see above) and by selecting 'aquatics'.
- If an athlete is NOT within the National TUE Pool but using a prohibited medication or method and is subject to doping control they are required to apply for a retroactive TUE as soon as possible after doping control. A retroactive TUE must be submitted to UKAD (UK Anti-Doping) within five (5) working days of the testing taking place.

All athletes are subject to 'Strict Liability' which means an athlete is wholly responsible for any banned substance found in their system, no matter how it got there.



General Information

All updates and additional information will be uploaded to the [Swim England Open Water National Masters Championships 2026](#).



Venue

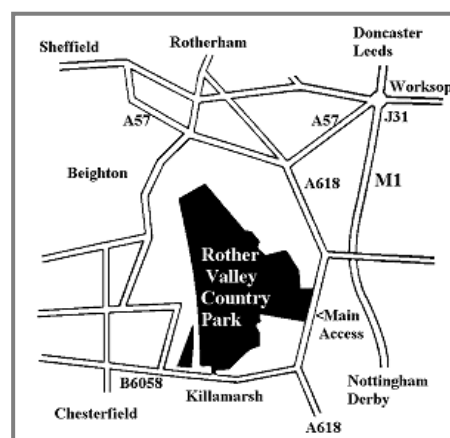
[Rother Valley Country Park](#)

Mansfield Road,
Wales Bar
Sheffield
S26 5PQ

Tel: 01709 334455

The Park

The 750 acre park hosts a number of walking and cycling routes which link into the TransPennine Trail and Sustrans Route 6. Bicycles are available to hire from the Water Sports and Activity Centre. Photographic ID will be required to hire a bicycle.



There are 5 lakes within the park, with the competition being held in the Main Lake which is 1 mile long. The Nature Reserve offers fantastic bird watching with over 260 different varieties of birds recorded over the past two years.



Travel

Car

We advise you to not use the above postcode in your Sat Nav to find the venue, as it takes you to an industrial estate nearby.

From Junction 31 of M1, take A57 towards Sheffield. At the roundabout take A618 towards Mansfield, Wales Bar and Clowne. At the traffic lights go straight on and the park entrance is at the bottom of the hill on the right.

Parking

Parking is available onsite.

Once past the gatehouse please follow the Swim England Event signage and the signage to the Water Sports and Activity Centre.

NOTE: the speed limit reduces along the access road, please adhere to the speed limit signs at all times.

Pay on exit:*

£1.70 for the first hour

and then an extra £1 per hour up to a maximum of £6.50 charged per car or motorcycle per day.

Payments can be made by cash or card at the payment machines located in the park for a speedier exit or by contactless card only at the exit barriers.

*Car parking cost may be subject to change by the park.

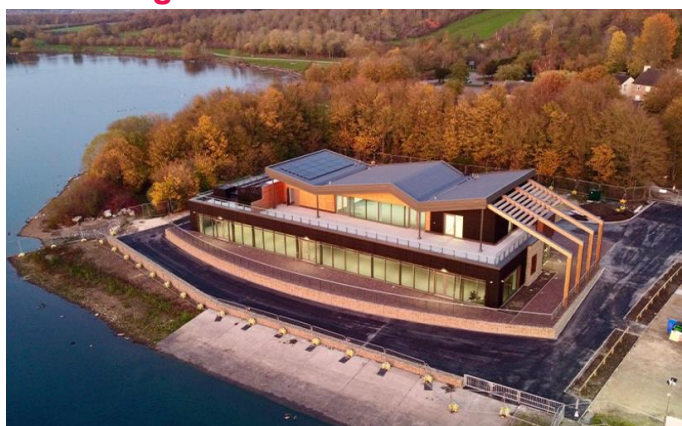


Spectator entry

General spectator entry into the Park is free of charge, so feel free to bring as many supporters with you as you like!

New for 2026 - Premier Spectator Viewing

The new [Waterfront Cafe](#) is now open right next to where the main action will take place.



Enjoy a **Premier Viewing Ticket for just £5**. Two viewing locations to choose from:

1. Viewing Platform: exclusive access to a balcony above the waterfront cafe, offering the perfect vantage point of both the race start and finish, for ticket holders only.
2. Waterside: exclusive access to waterside path, opposite the finish, with restricted access for ticket holders only.

Tickets go on sale from **8 June** and are valid for one distance racing only, and are subject to availability:

Premier Spectator Viewing	Viewing Platform	Purchase HERE
Premier Spectator Viewing	Waterside	Purchase HERE



Food and Drink

NEW: The Waterfront cafe sells a range of hot and cold food alongside beverages. There is ample indoor and outdoor seating.

The Stables café will also be open throughout the day selling a range of hot and cold food and beverages. There will also be mobile outlets serving hot and cold food, snacks and drinks.



Merchandise

Event Hoodies and T-Shirts pre-orders

Event hoodies and t-shirts will be available to pre-order [HERE](#).

Pre-orders must be received by **Friday 3 July**. **Pre-orders** will be available for collection at the Championships from the Front of House Desk.

NOTE: Event hoodies and T-shirts for other events, including the Swim England Open Water National Age Group Championships, will be available for purchase at the same time. Please ensure you select the correct hoodie/T-shirt, as exchanges and refunds will not be possible.

Event Hoodies and T-Shirts on-venue sales

A limited selection of hoodies and t-shirts will be available to purchase at the event, subject to availability.

Swim England Merchandise

Swim England merchandise will be available to purchase at the Front of House desk.



Event Photography

Official event photography will be provided by Will Johnston Photography. (www.willjohnstonphotography.com)

Please see below for the exclusive offer open competitors of Swim England Open Water National Masters Championships 2026.



W I L L J O H N S T O N P H O T O G R A P H Y

Will Johnston Photography is proud to be the official photography provider for this event.

Have specific requests?

Please text us on 07777 764684 details of competitors, cap number, and heat and lane numbers we will do what we can to focus on them.

Photographs are available on our website:
willjohnstonphotography.com



Prices increase by 20% within 48 hours of event so order today!

email: pictures@willjohnstonphotography.com **telephone:** 07777 764684 **@whljohnston**
www.willjohnstonphotography.com

Conditions

1. The Promoter is the Swim England Masters Swimming Leadership Group (“the Group”) which reserves full powers over Swim England Open Water National Masters Championships (“the Championships”), including but not limited to cancelling, postponing or changing the Championships venue and/or format due to reasons beyond its reasonable control.
2. The Championships shall be held under Swim England Regulations and World Aquatics Technical Rules of Open Water Swimming, except where varied by these conditions.
3. Entries may only be made using the online entry system.
4. Competitors must be registered with Swim England as Club Compete members, Scottish Swimming or Swim Wales equivalent. Temporary Swim England members are eligible to enter these Championships:
 - 4.1 Temporary Swim England Membership applications must be submitted no later than 7 working days ahead of entry closing deadline.
5. Entries are open to overseas competitors registered with other countries affiliated to World Aquatics.
6. A competitor registered to a Home Nation club can only compete for one club in the Championships and must be a registered member of that club on the day that they enter.
7. By entering this event, competitors consent to report to Doping Control if requested at any time during this event. Competitors also agree to abide by the Aquatics GB & UKAD Anti-Doping Rules. (Further information available [here](#).)
8. The Female category is for birth sex females in accordance with Swim England’s Transgender and Non-Binary Competition Policy. By entering the ‘Female’ category, a competitor confirms that their birth sex is female.
9. Entry fees to be detailed within the event Entry Pack.
10. Estimated swim time will be required at the time of entry to enable seeding for the events.
11. The Group reserves the right to close entries before the published closing date should the event reach maximum capacity.
12. Entries deadline is 12 noon, Wednesday 8 July 2026.
13. The following events will be available:
 - 13.1 **Individual events** (female; open/male): 1km, 3km and 5km
 - 13.2 **Mixed relay team events** (consisting of two females and two open/male):
500m x4 competitors
14. An athlete fitness to swim declaration must be made at the time of entry (through the online entry system) and again on paper on the day of the event.
15. The age of competitors shall be determined as at midnight on 31 December in the year of competition. The minimum age is 18 years on the first day of the competition.
16. The age groups for Individual events listed in 13.1 are:

18-24 years	40-44 years	60-64 years
25-29 years	45-49 years	65-69 years
30-34 years	50-54 years	70-74 years
35-39 years	55-59 years	75-79 years

and in five year bands as high as necessary.
17. The combined ages of the relay team members must fall within the below age groups, with the proviso that all team members must be 25 years of age or older. The age groups for Relay team events listed in 13.2 are:

100-119 years	200-239 years
120-159 years	240-279 years
160-199 years	280-319 years

And in 40-year increments as high as necessary.

18. There shall also be relay team events for teams with the combined ages of 72 years and above with all team members being aged 18 years or above on the day of the Championships.
19. All Home Nation competitors in a relay team must be registered members of the same club on the day that they enter the Championships and:
 - 19.1 All competitors of a relay team must wear the same colour and style of swim cap.
 - 19.2 When a club enters more than one relay team, swim cap colour and style must be different to the club's other team for identification purposes.
20. All relay team events will be Heat Declared Winner within each Masters Age Group.
21. Once entries have closed, waves will be determined for all events and published in the competitor information pack ahead of the event.
22. As per World Aquatics Rules (Part Three, Article 10, see [here](#)):
 - 22.1 Water temperature below 18°C, competitors must wear: a wetsuit and start the race wearing one (1) cap or two (2) caps and may wear goggles. Only one swimsuit may be worn underneath the wetsuit.
 - 22.2 Water temperature from 18.0°C or above, competitors must wear: one (1) swimsuit in one or two pieces (not a wetsuit, subject to clause 23.3; must start the race wearing one (1) cap or two (2) caps and may wear goggles. A competitor may wear a nose clip and/or use earplugs.
 - 22.3 If the water temperature is between 18.0°C and 20.0°C, and the Event Management, upon recommendation from the Safety Officer and Medical Officer, may determine that conditions are hazardous for the competitors, who will then be required to compete in wetsuits.
23. Wetsuits and swimsuits must comply with World Aquatics Open Water Rules (see Part Three, 6.8.1.3 and 6.9.1 [here](#)).
 - 23.1 Wetsuits shall completely cover torso, back and thighs. They shall not extend beyond the neck, wrists and ankles. The body parts, after the shoulder and/or below the thigh do not necessarily need to be covered.
 - 23.2 Swimsuits shall not cover the neck, extend past the shoulders or extend below the ankle. Subject to these specific shape specifications, swimsuits for open water swimming competitions shall further comply with all other requirements applicable to swimsuits for swimming-pool competition.
24. A cut off time limit will be 120 minutes for the 5km, 90 minutes for the 3km, 45 minutes for the 1km individual events, 30 minutes for relay event from the start of each race.
25. Registration: competitors MUST sign in at the registration desk at the appropriate time.
26. Competitor Numbers: competitors must have their number displayed on their back or upper arms and WEAR THE ELECTRONIC CHIP AND/OR WRIST BAND PROVIDED. When wetsuits are in use, only the hands and hat will be numbered.
27. All competitors must have trimmed fingernails and toenails and must not wear any jewellery, including watches.
28. No competitor shall be permitted to use or wear any device, which may be an aid to their speed, endurance or buoyancy. Goggles, cap, nose clip and ear plugs may be used.
29. Competitors shall be allowed to use grease or other substances providing these are not deemed as excessive, in the opinion of the Referee.
30. Medals will be awarded as follows:
 - 30.1 **Individual events:** the first three female and open/male competitors in each Masters Age Group, in each individual distance event outlined in 13.1.
 - 30.2 **Mixed relay team events:** the first three relay teams in each Masters Age Group as outlined in 13.2.
31. Safety and Conditions:
 - 31.1 Water temperature will be monitored in the run up to the Championships.
 - 31.2 On the day of the Championships, prior to the start of the competition, the course will be inspected and water temperature measured, in the presence of

a coach or in the absence of a coach an athlete representative, to ensure all of the safety requirements are met and the conditions are suitable for staging the Championships.

- 31.3 Reasonable modifications may be made to the course or the manner in which the Championships is conducted based on the conditions at the time.
 - 31.4 A Medical Officer will be appointed. The Medical Officer will be responsible to the Event Management team for all medical aspects relating to the Competition and competitors.
 - 31.5 The Medical Officer, with the Safety Officer, will advise the Event Management team if they consider that conditions are unsuitable for running the competition, making recommendations for modifying the course or way the event is to be raced.
 - 31.6 The requirements of World Aquatics regarding Water Analysis Reports at defined intervals shall not apply to this Competition. The venue shall confirm water suitability direct to Swim England prior to competition taking place.
32. Cancellation and Abandonment:
- 32.1 If the conditions are deemed to be unsuitable and not safe at the Championships, a decision may be made to cancel or abandon the Championships.
 - 32.2 In the case of cancellation or abandonment, full refunds of entry fees to the Championships will be offered to all competitors.
 - 32.3 In the case of cancellation or abandonment, no refunds will be offered for any other expenses incurred in relation to the Championships.

Appendix 1 – Athlete Declaration



GoCardless Swim England Open Water National Masters Championships 2026 Athlete Declaration

Event: Open Water National Masters Championships 2026

Date: 26th July 2026

Location: Rother Valley Country Park

IMPORTANT - Please read this document carefully, you will be required to sign this at the event, please make sure you are familiar with all the below points.

Any queries should be raised with Swim England Events nationalevents@swimming.org

1. I am aware of the need to seek appropriate medical advice if I have concerns as to the state of my health. I have not been informed by any medical practitioner and I do not have any knowledge of any medical condition which would make it inadvisable for me to participate in Open Water Swimming events or any other associated activities. Accordingly I hereby certify that I am physically fit and well to participate.

2. I am aware of and appreciate the inherent risks involved in Open Water swimming

2. I am aware of and appreciate the inherent risks involved in Open Water swimming competitions including the possibility of injury and accident.

3. I undertake at all times to use my best endeavors to compete in a safe and proper manner and not to do anything, which would expose myself or fellow swimmers to unnecessary risk or injury.

4. I further undertake at all times to take all reasonable safety measures for the protection of myself and fellow swimmers and to inform the Referee of any concerns I may have as regards to safety.

5. I have read and understand the above provisions and agree to abide by them.

6. (You will be required to sign this form at the event.)

By entering the competition, the competitor acknowledges and consents to the inherent risks involved in open water swimming. Swim England cannot be held responsible for any loss or damage to personal belongings and the competitor must take all reasonable steps against any such loss or damage.

Are you a member of Swim England *

Competitor Membership Number *

Name of Competitor *

First

Last

Competitor Date of Birth *

DD MM YYYY

Competitor Email Address *

Email Confirm Email

Event/s competing in: *

- 1km
- 3km
- 5km
- Mixed Relay

Do you have any medical conditions that the organisers should be aware of to ensure your safety? *

Please Choose

I consent to Swim England processing any medical data that I may have supplied, for the purposes of ensuring a safe event.

Emergency Contact Name *

First Last

Emergency Contact Telephone Number *

Competitor Signature *

Submit